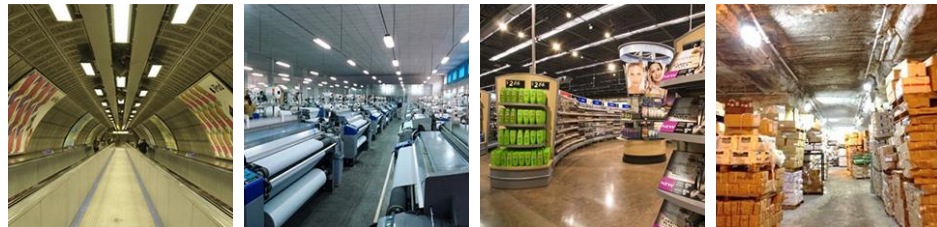




# BRIGHTSCAPE 1000 LED FLOOD LIGHT



## Big Light, Low Glare

It is different from the common low wattage Flood Light in the market. The big diffuser covering the array of LEDs provides a better light distribution while effectively reducing the glare and discomfort.



## Wall mounting

This luminaire is good for general lighting installations, and is easily mounted on walls. It is also useful as supplementary lighting, such as over work surfaces – in a warehouse, factory, or wherever you like.



## Energy Saving

The combination of high-efficacy LED components with excellent whole system design has SONARAY LED lighting achieving energy savings of 40% - 80% compared with traditional lighting sources.



## Complies with Multinational Certifications

Approved by recognized national laboratories for UL (USA and Canada), CE (Europe) and RCM (Australia).



## Quality Core Component

Excellent luminaire design to the core: starting with the LED packages themselves. These luminaires only use high quality SMD packages from CITELED – chipsets that have great quality and long life as backed by LM-80 and TM-21 reports. Quality inside the luminaires that shines on the outside.



## Desirable CRI

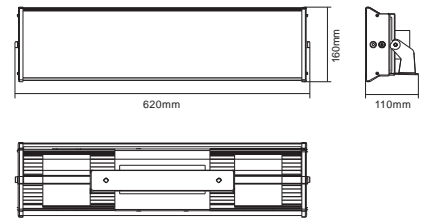
With a CRI of 80 SONARAY's BrightScape brings out the colors you want wherever and however you decide to install it.

# BRIGHTSCAPE 1000 LED FLOOD LIGHT



## Specifications

Material: Aluminum  
 Driver: Built-in  
 Input Voltage: AC100-277V ~ 50/60Hz  
 Power Factor: ≥ 0.9  
 Operating Temperature: -25°C~+45°C, -13°F~+113°F  
 Lifetime : ≥ 40,000hrs

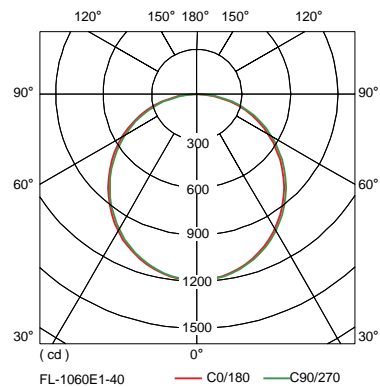
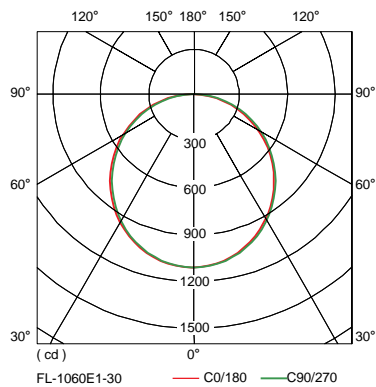


## Color Temperature



Model No.	Power (W)	Luminous Flux (lm)	Luminous Efficacy (lm/W)	Color Temperature (K)	CRI (Ra)	Beam Angle (°)	Weight (kg/lb)
FL-1060E1-30	30	2550	85	5000	≥80	110	3.9/8.60
FL-1060E1-40	40	3320	83	5000	≥80	110	3.9/8.60

## Light Distribution Curve



## Illuminance Distribution

H(m)	E(lx)	D(cm)
1	902	293
2	226	586
3	100	880
4	56	1173
5	36	1465

H(m)	E(lx)	D(cm)
1	1175	293
2	294	586
3	131	880
4	73	1173
5	47	1465

[www.sonarayled.com](http://www.sonarayled.com)

© 2014 DASCOM LED LIGHTING (JIANGMEN) CO.,LTD. All rights reserved.  
 All company and product names are trademarks or registered trademarks of their respective owner. Specifications are subject to change without notice.

Version 1.3. Edited 2015.06